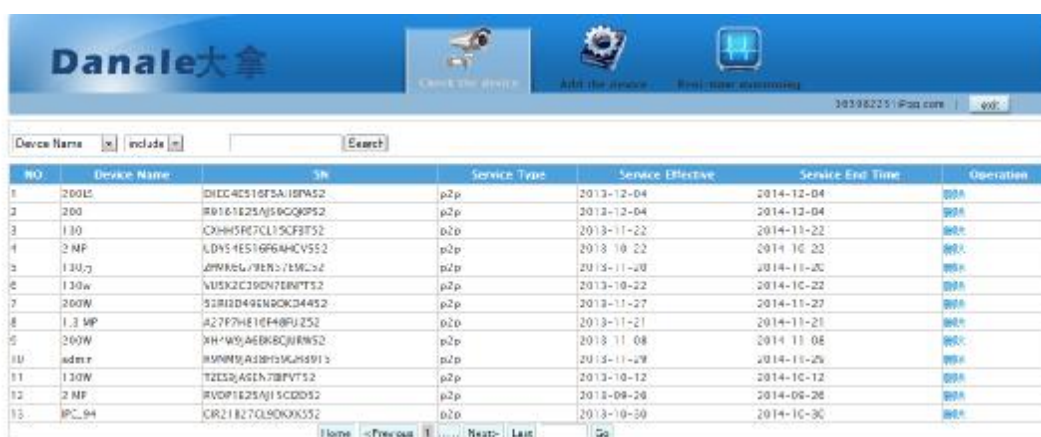


P2P connection from Web page

Open IE browser, input <http://www.danale.com> in the address bar, you will see the following picture:

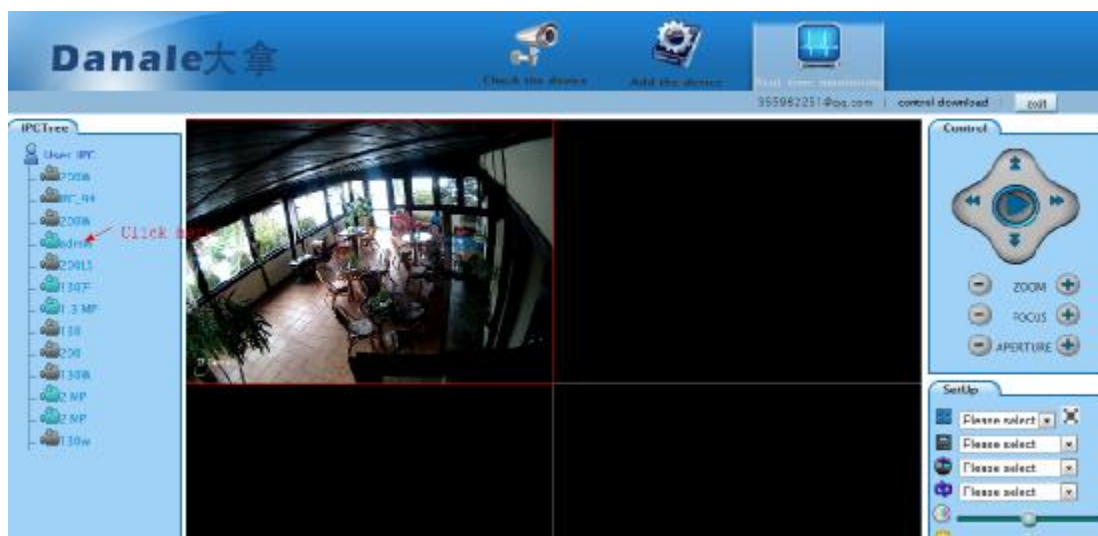
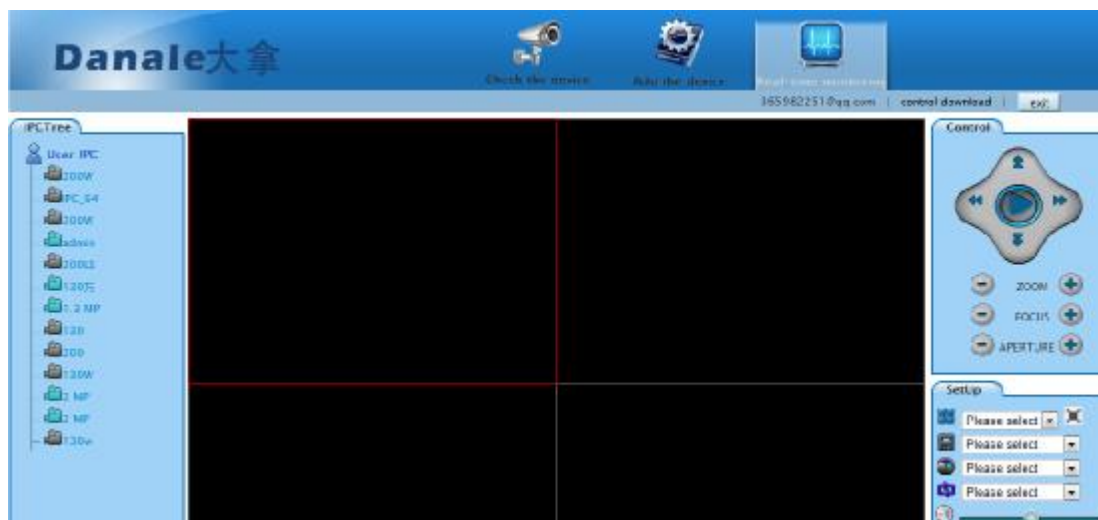
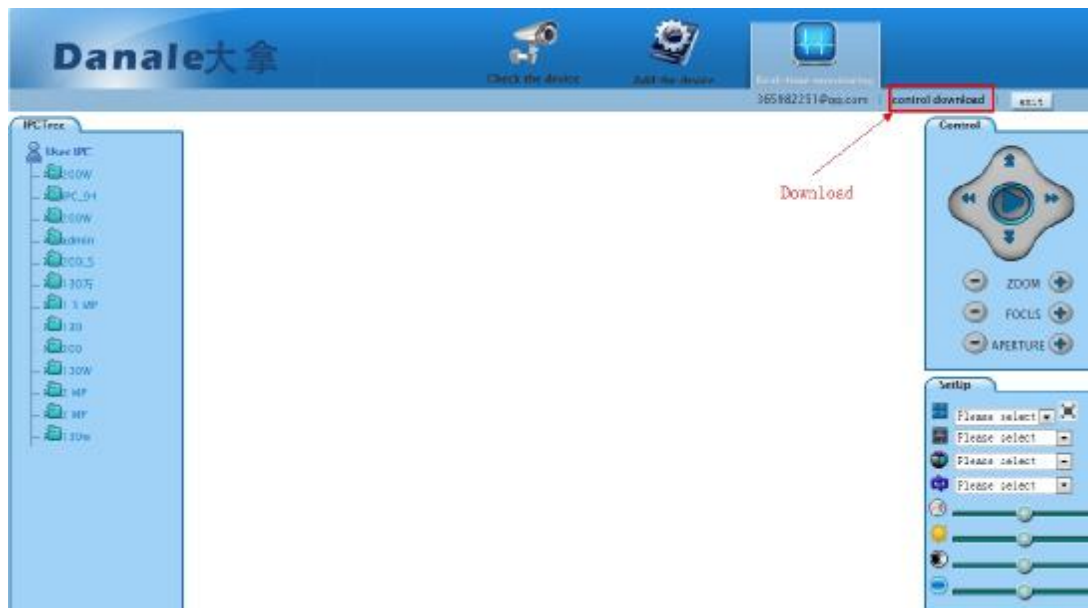


Please sign in first, then input your User ID and Password to login, you can Check the device, as is shown in the following picture:



Here you can select Check the device, Add the device and Real-time monitoring.

Of course, you must add the device first, click Add the device, then you will see the following picture:



Click the device in the device list on the left to play. You can set the parameters to control the devices on the right.